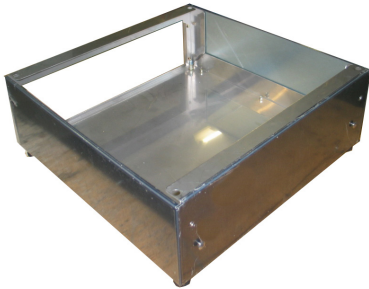


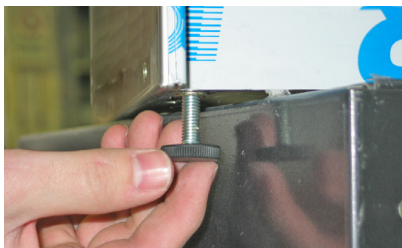
Jug Extension

Please proceed as shown in the following pictures.

Because of the weight of the unit it would be better to work in pairs for placing the unit safe onto the jug extension!



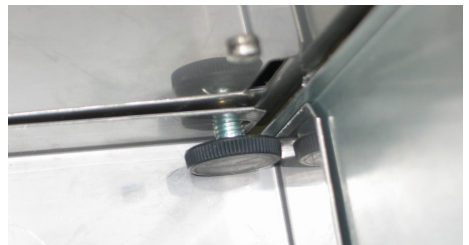
1 First of all place the jug extension on the provided place and put it into water level by adjusting the feet.



2 Stagger the juice dispenser onto the jug extension and remove the adjustable feet of the unit.



3 Place the juice dispenser straight onto the jug extension.



4 To fix the juice dispenser secretly on the jug extension, screw the feet into the corresponding openings under the unit.